

Concept of Supporting Platform for Life Science Education Research in Kyushu University

Problem Information on the use of research equipment is not shared.

I want to use the latest research equipment but don't know which department has it.

This equipment is always fully reserved. I wonder if other departments have similar equipment.

It's too much trouble to obtain permits and make reservations for using equipment owned by other departments.

I want to use the latest experimental techniques for my research, but the condition-setting is difficult.



State Managed at the departmental level

Graduate School of Medical Sciences

- Research Support Center, Research Center for Human Disease Modeling

Faculty of Dental Science

- Cooperative Shared Laboratories

Graduate School of Pharmaceutical Sciences

- Center of Drug Discovery and Evolution

Medical Institute of Bioregulation

- Laboratory for Research Support / Laboratory of Embryonic and Genetic Engineering

Faculty of Agriculture

- Center for Advanced Instrumental and Educational Supports

Establishment of a centralized management system

Result

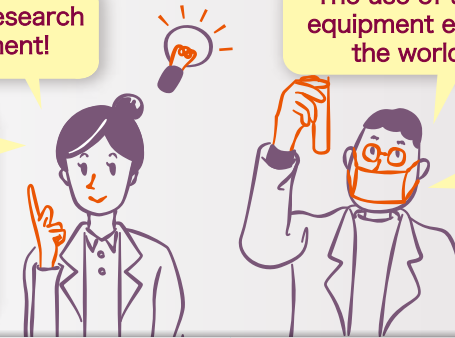
Improves research and education capabilities through university-wide sharing of research equipment

Enables cutting-edge research using shared equipment!

The use of advanced research equipment enabled us to obtain the world's first findings

Centralized management of reservations of the shared equipment on the portal site enables easier research planning

There is no need to purchase the latest research equipment on our own, which allows us to use our research funds more efficiently



Efforts to continuously foster and support young, female, and foreign researchers in the interest of promoting diversity in the research environment

Supporting Platform for Life Science Education Research in Kyushu University

- Establishment of a portal site for shared-use equipment
- Provision of advanced research and experimental techniques, centralization of seminars
- Support for the establishment of a cross-departmental research system
 - Sustainable management (balance between management costs and beneficiary payments)

Efforts for developing facilities that are shared by multiple departments for enhancing research capabilities

Implementation of the mission statement for university management reforms

University management reform

- Reduction of research equipment acquisition cost (less equipment duplications)
- Reduction of equipment management cost (better equipment operation efficiency)

